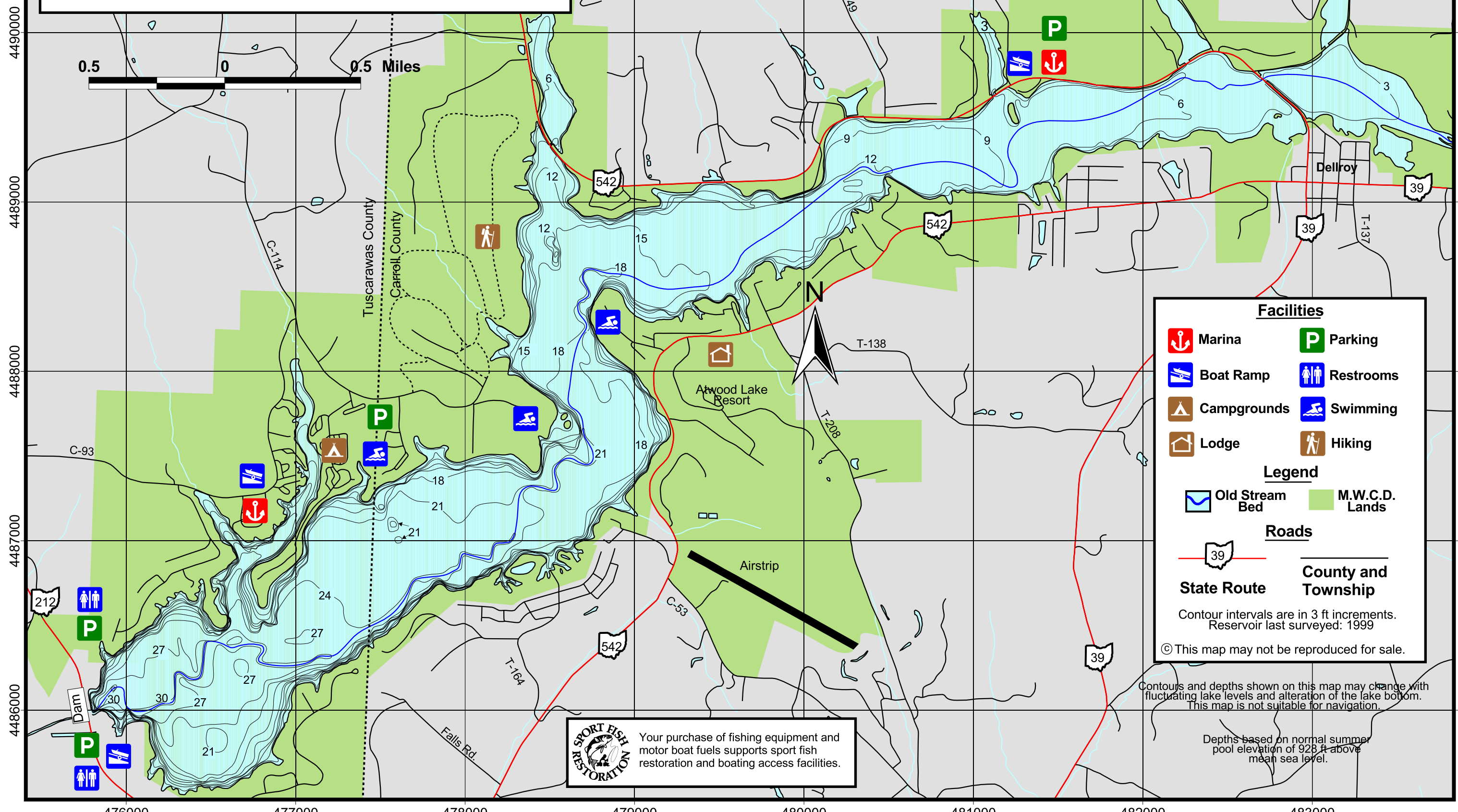




# Atwood Lake

Carroll and Tuscarawas Counties

1,529 Acres of Fishing Water  
28.5 Miles of Shoreline



**Facilities**

- Marina
- Boat Ramp
- Campgrounds
- Lodge
- Parking
- Restrooms
- Swimming
- Hiking

**Legend**

- Old Stream Bed
- M.W.C.D. Lands

**Roads**

- State Route
- County and Township

Contour intervals are in 3 ft increments.  
Reservoir last surveyed: 1999

© This map may not be reproduced for sale.

**SPORT FISH RESTORATION**  
Your purchase of fishing equipment and motor boat fuels supports sport fish restoration and boating access facilities.

Contours and depths shown on this map may change with fluctuating lake levels and alteration of the lake bottom. This map is not suitable for navigation.

Depths based on normal summer pool elevation of 928 ft above mean sea level.

# Atwood Lake Fishing Map