
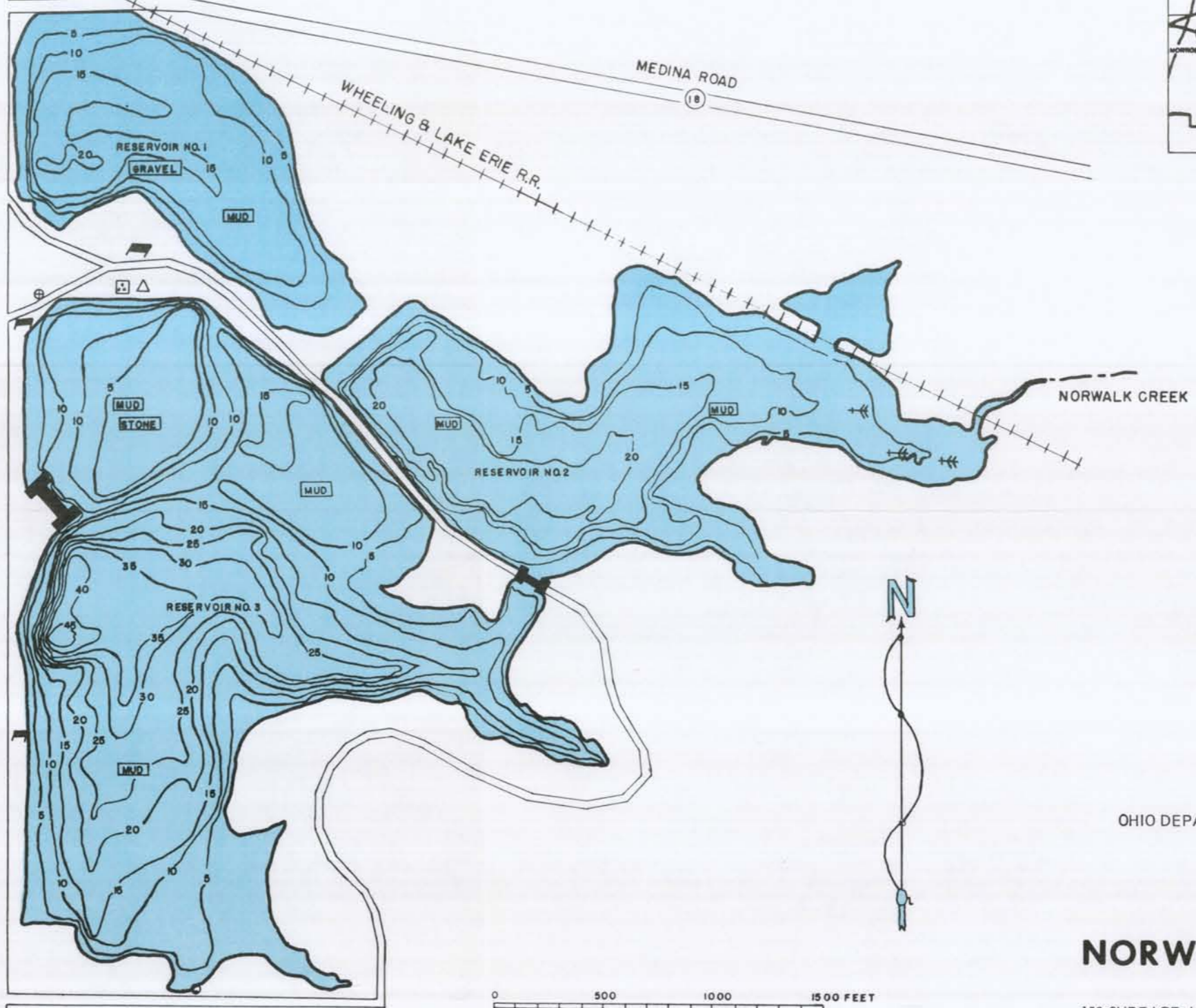
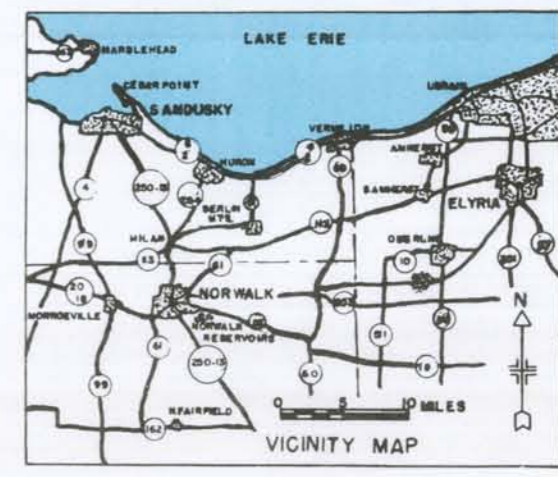
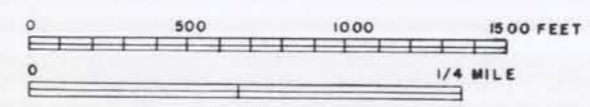


CITY OF
NORWALK

| L E G E N D | |
|-------------------------|---|
| SHORE FEATURES | |
| PARKING AREA |  |
| BOAT LAUNCHING |  |
| U.S. HIGHWAY |  |
| STATE HIGHWAY |  |
| COUNTY OR TOWNSHIP ROAD |  |
| PRIVATE CLUB HOUSE |  |
| RAILROAD |  |
| CITY PARK AREA |  |
| PICNIC AREA |  |
| FOOD SERVICE |  |
| GAS STATION |  |
| SPILLWAY |  |
| LAKE FEATURES | |
| BOTTOM TYPE |  |
| CONTOUR (DEPTH IN FEET) |  |
| FALLEN TREES |  |



250 2 MILES

OHIO DEPARTMENT OF NATURAL RESOURCES
DIVISION OF WILDLIFE

NORWALK RES. 1, 2 & 3

HURON COUNTY

159 SURFACE ACRES 5 MILES OF SHORELINE

Total copies printed: 2,000
Unit cost: \$.0556
Publication date: 3/84
(Includes paper costs)